

WARM
MODERN



CENTRE OF ATTENTION

Architect Wanda Ely reimagines a floor plan to position the kitchen in the middle of the house



PHOTOGRAPHY BY ERIK PUTZ



WALNUT SHELL

Frame an island in contrasting material for a sharp effect. "The walnut 'wrapper' provides a clean finish to the cabinets and island, but it also delineates the kitchen," says Wanda.

IN PLAIN SIGHT

Rather than try to disguise the bulkhead that conceals plumbing, Wanda worked it into her design. “We took advantage of this drop and faced it with walnut as well, to further define the kitchen zone in a stylish and graphic way,” she says.



STAINLESS STEEL DETAIL

“The ceramic tile we loved for the backsplash had a curve to it, which would have been awkward to put outlets up against, so we needed a flat surface,” says Wanda. “We opted for a band of stainless steel to form a custom trim between the tiles and counters.”



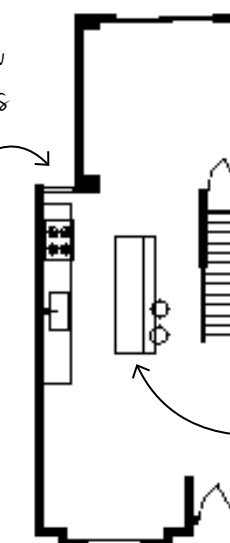
MIX HIGH AND LOW

All of the custom-look cabinetry is from Ikea. Wanda replaced its standard-issue hardware with sleek pulls. “They are a really elegant detail and help the kitchen feel like a jewel,” she says.



FLOOR PLAN

Wanda moved the kitchen from the rear of the house to the middle, making it more conducive to cooking and entertaining.



When moving into a new home, it's not uncommon to have to put some design visions on hold temporarily. And that's exactly what Keri Ryan and her husband, Ben Collinge, planned on. “When we bought our place, there was a dark, dysfunctional kitchen at the back of the house,” says Keri. “We spruced it up with some paint and new appliances and thought it would do us for a couple of years. Well, two years turned into eight, and what ended up bothering us the most was that there was only one drawer, and most of our utensils were in a shoebox.” They drew up a wish list for a

new kitchen, and when she's asked what was on it, Keri jokes, “One more drawer!”

The couple hired architect Wanda Ely to interpret their vision (they now have seven drawers: some pull out, pantry style, and two are refrigerated) as well as share her design expertise. “Wanda had the ingenious idea of moving the kitchen to the centre of the main floor,” says Keri. “It makes the kitchen the focal point. She also recommended installing a much larger sliding door at the back, which totally transformed the feeling of light in the house. Her design means that cooking has once again become a central part of our lives.”

FRIDGE-FREE

"I fitted the island with drawer fridges and freezers so that we could use the space normally allocated to a large fridge for pantry storage. The couple shop for fresh food regularly, so the smaller drawers really work well for them," says Wanda.

LIGHT SHOW

Use individual elements like pendant lights to incorporate interesting shapes and a jolt of contrasting colour in a mostly white kitchen.



HITCH RAW 18-IN. STOOL
\$199, CB2.COM.



SWEEPER AND DUSTPAN
\$55, MENUDESIGNSHOP.COM.



A110 LIGHT BY ALVAR AALTO
\$330, ARTEKFURNITURE.US.

**WARM
MODERN**

Natural stone and tactile accessories add an organic touch to a contemporary kitchen



BOTTLE GRINDERS
\$60/SET OF 2, MENUDESIGNSHOP.COM.



CHERRY-WOOD SERVING BOWL
\$52, WILLIAMS-SONOMA.COM.



MARBLE FRUIT BOWL
\$60, CRATEANDBARREL.COM.

ESSENTIALS

**SURFACE
ELEMENTS**

Smooth wood cabinets paired with glossy white anchor this contemporary look. Finish with hits of stainless steel.



AKURUM/SOFIELUND CABINETS
\$159/LINEAR FT., IKEA.CA.

walnut-effect doors



glossy white cabinets



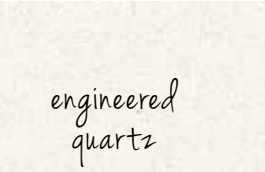
ART STRIP TILES
\$19/SQ. FT., SALTILLO-TILES.COM.

linear
backsplash



ATLAS SUCCESSI BAR PULL
\$10, ALLMODERN.COM.

polished-nickel handle



CAESARSTONE BLIZZARD SURFACE
\$90/SQ. FT., CAESARSTONE.CA.

"I like the kitchen at the centre of the house – the hub of the action."

– Wanda Ely, architect